

# G-GI013

Technical specifications

# GRIP

### Operating mode:

The internal grippers dip into drillings, enlarge their external diameter by expansion of the silicone membrane, under pressure, and thus frictionally engaged hold to the bore wall. When pressure is switched off, the silicone membrane self-reliant retracts into the grippers inside due to its elastic behavior.

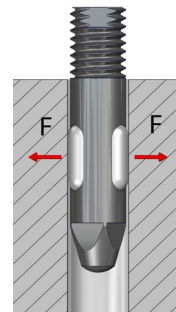
### Advantages:

- Minimum installation size possible
- Low gripper weight
- Simple gripper principle
- Cost-efficient
- Quick membrane replacement possible
- Indirect request via pressure switch in the supply line possible



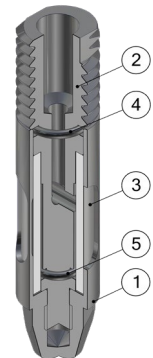
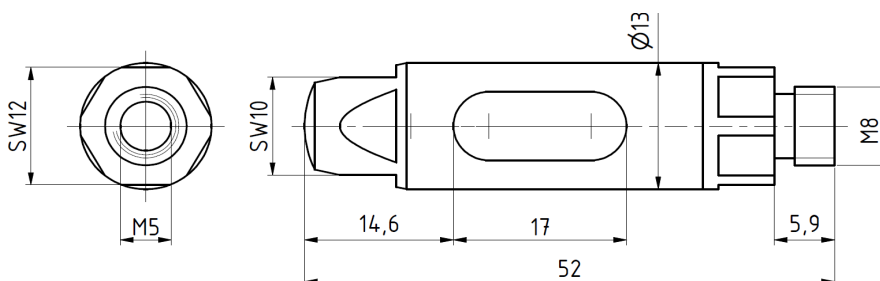
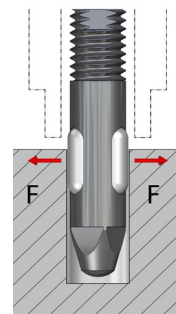
### Technical specifications

Technical specifications	GI013
Working pressure [bar]	3 - 6
Grip force at 6 bar [N]	40
For bore diameter [mm]	13,1 – 14,5
Allowed component weight [kg]	4
Gripper weight [kg]	0.032
Compressed air connection Ø	M5
Assembly Ø	M8
Stroke cycles at ideal application conditions	500.000
Membrane material	Silicone rubber
Temperature range	-40° C to 300° C



### Limits of the application range

Minimum immersion depth of the membrane [%]	60
To protect the membrane from damage at low installation depth, use customers hull	DH = DGIS+10%
Reduced grip force, when the membrane is not completely covered	



### Internal gripper Ø013...

G-GI013 External diameter 13, screw thread M8

### Replacement tube

EG-GI013-S for internal gripper GI013

Pos.	Description
1	Hull
2	Mandrel
3	Tube
4	O-ring 1
5	O-ring 2

# G-GI014

Technical specifications

# GRIP

### Operating mode:

The internal grippers dip into drillings, enlarge their external diameter by expansion of the silicone membrane, under pressure, and thus frictionally engaged hold to the bore wall. When pressure is switched off, the silicone membrane self-reliant retracts into the grippers inside due to its elastic behavior.

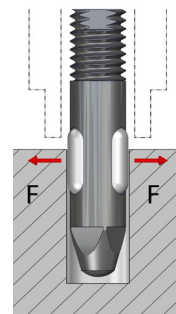
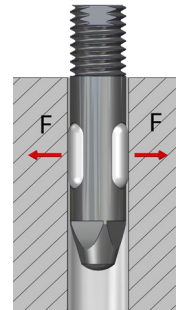
### Advantages:

- Minimum installation size possible
- Low gripper weight
- Simple gripper principle
- Cost-efficient
- Quick membrane replacement possible
- Indirect request via pressure switch in the supply line possible



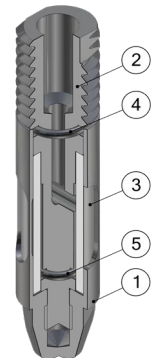
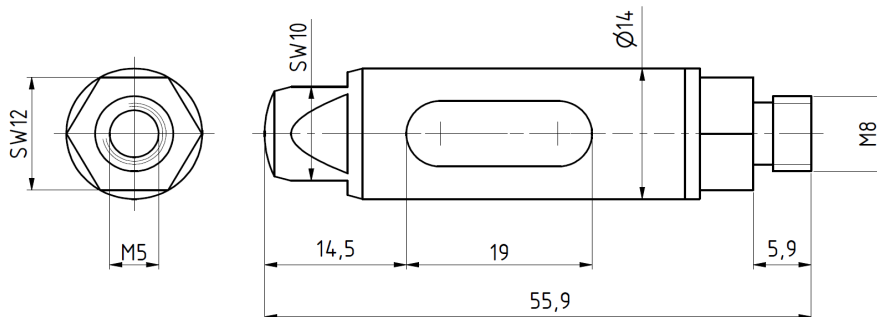
### Technical specifications

Technical specifications	GI014
Working pressure [bar]	3 - 6
Grip force at 6 bar [N]	45
For bore diameter [mm]	14,1 – 15,5
Allowed component weight [kg]	4,5
Gripper weight [kg]	0.04
Compressed air connection Ø	M5
Assembly Ø	M8
Stroke cycles at ideal application conditions	500.000
Membrane material	Silicone rubber
Temperature range	-40° C to 300° C



### Limits of the application range

Minimum immersion depth of the membrane [%]	60
To protect the membrane from damage at low installation depth, use customers hull	DH = DGIS+10%
Reduced grip force, when the membrane is not completely covered	



### Internal gripper Ø014...

G-GI014 External diameter 14, screw thread M8

### Replacement tube

EG-GI014-S for internal gripper GI014

Pos.	Description
1	Hull
2	Mandrel
3	Tube
4	O-ring 1
5	O-ring 2

# G-GI015

Technical specifications



### Operating mode:

The internal grippers dip into drillings, enlarge their external diameter by expansion of the silicone membrane, under pressure, and thus frictionally engaged hold to the bore wall. When pressure is switched off, the silicone membrane self-reliant retracts into the grippers inside due to its elastic behavior.

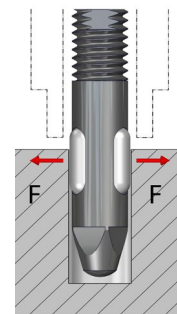
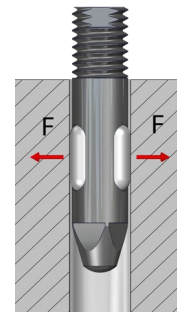
### Advantages:

- Minimum installation size possible
- Low gripper weight
- Simple gripper principle
- Cost-efficient
- Quick membrane replacement possible
- Indirect request via pressure switch in the supply line possible



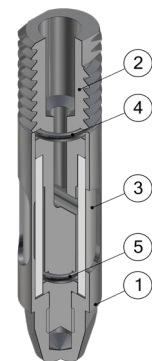
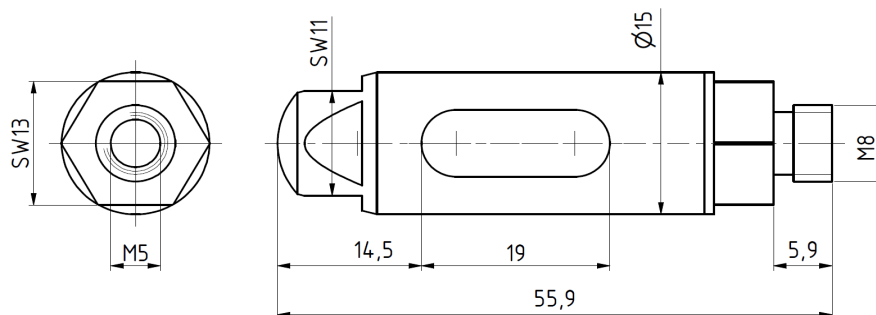
### Technical specifications

Technical specifications	GI015
Working pressure [bar]	3 - 6
Grip force at 6 bar [N]	45
For bore diameter [mm]	15,1 – 16,5
Allowed component weight [kg]	4,5
Gripper weight [kg]	0.046
Compressed air connection Ø	M5
Assembly Ø	M8
Stroke cycles at ideal application conditions	500.000
Membrane material	Silicone rubber
Temperature range	-40° C to 300° C



### Limits of the application range

Minimum immersion depth of the membrane [%]	60
To protect the membrane from damage at low installation depth, use customers hull	DH = DGIS+10%
Reduced grip force, when the membrane is not completely covered	



### Internal gripper Ø015...

G-GI015 External diameter 15, screw thread M8

### Replacement tube

EG-GI015-S for internal gripper GI015

### Pos. Description

1	Hull
2	Mandrel
3	Tube
4	O-ring 1
5	O-ring 2

# G-GI016

Technical specifications

# GRIP

### Operating mode:

The internal grippers dip into drillings, enlarge their external diameter by expansion of the silicone membrane, under pressure, and thus frictionally engaged hold to the bore wall. When pressure is switched off, the silicone membrane self-reliant retracts into the grippers inside due to its elastic behavior.

### Advantages:

- Minimum installation size possible
- Low gripper weight
- Simple gripper principle
- Cost-efficient
- Quick membrane replacement possible
- Indirect request via pressure switch in the supply line possible

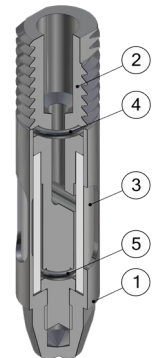
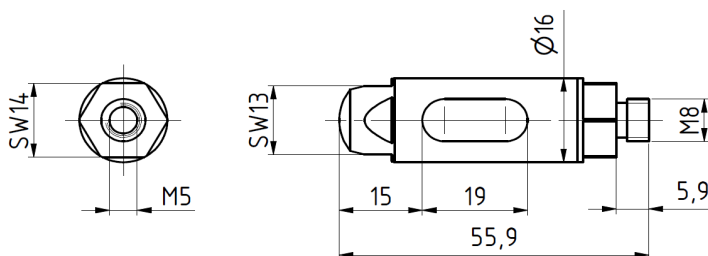
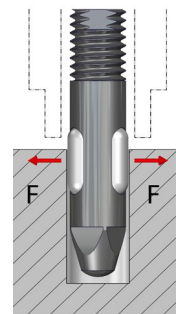
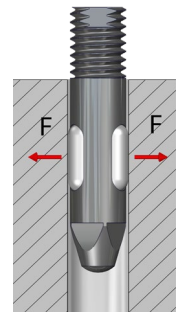


### Technical specifications

Technical specifications	GI016
Working pressure [bar]	3 - 6
Grip force at 6 bar [N]	50
For bore diameter [mm]	16,1 – 17,5
Allowed component weight [kg]	5
Gripper weight [kg]	0.054
Compressed air connection Ø	M5
Assembly Ø	M8
Stroke cycles at ideal application conditions	500.000
Membrane material	Silicone rubber
Temperature range	-40° C to 300° C

### Limits of the application range

Minimum immersion depth of the membrane [%]	60
To protect the membrane from damage at low installation depth, use customers hull	DH = DGIS+10%
Reduced grip force, when the membrane is not completely covered	



### Internal gripper Ø016...

G-GI016 External diameter 16, screw thread M8

### Replacement tube

EG-GI016-S for internal gripper GI016

Pos.	Description
1	Hull
2	Mandrel
3	Tube
4	O-ring 1
5	O-ring 2