

# G-GI009

Technical specifications

# GRIP

### Operating mode:

The internal grippers dip into drillings, enlarge their external diameter by expansion of the silicone membrane, under pressure, and thus frictionally engaged hold to the bore wall. When pressure is switched off, the silicone membrane self-reliant retracts into the grippers inside due to its elastic behavior.

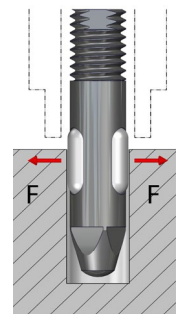
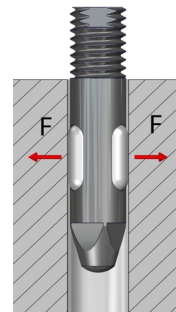
### Advantages:

- Minimum installation size possible
- Low gripper weight
- Simple gripper principle
- Cost-efficient
- Quick membrane replacement possible
- Indirect request via pressure switch in the supply line possible



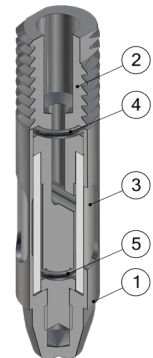
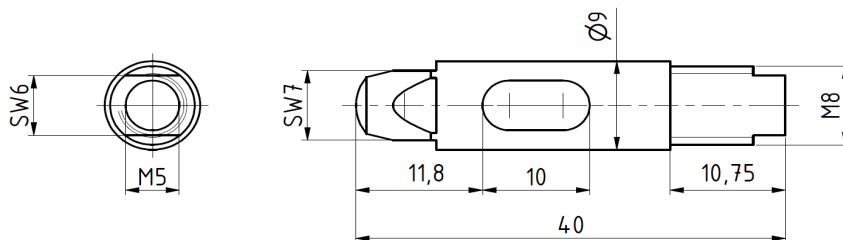
### Technical specifications

Technical specifications	GI009
Working pressure [bar]	3 - 6
Grip force at 6 bar [N]	17
For bore diameter [mm]	9,1 – 10,0
Allowed component weight [kg]	1,7
Gripper weight [kg]	0.012
Compressed air connection Ø	M5
Assembly Ø	M8
Stroke cycles at ideal application conditions	500.000
Membrane material	Silicone rubber
Temperature range	-40° C to 300° C



### Limits of the application range

Minimum immersion depth of the membrane [%]	60
To protect the membrane from damage at low installation depth, use customers hull	DH = DGIS+10%
Reduced grip force, when the membrane is not completely covered	



### Internal gripper Ø009...

G-GI009 External diameter 9, screw thread M8

### Replacement tube

EG-GI009-S for internal gripper GI009

Pos.	Description
1	Hull
2	Mandrel
3	Tube
4	O-ring 1
5	O-ring 2

# G-GI010

Technical specifications

# GRIP

### Operating mode:

The internal grippers dip into drillings, enlarge their external diameter by expansion of the silicone membrane, under pressure, and thus frictionally engaged hold to the bore wall. When pressure is switched off, the silicone membrane self-reliant retracts into the grippers inside due to its elastic behavior.

### Advantages:

- Minimum installation size possible
- Low gripper weight
- Simple gripper principle
- Cost-efficient
- Quick membrane replacement possible
- Indirect request via pressure switch in the supply line possible

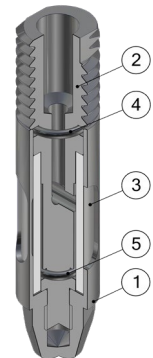
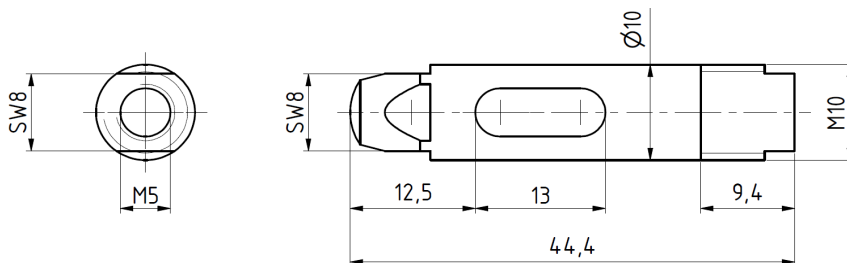
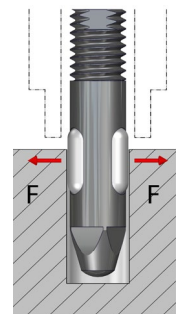
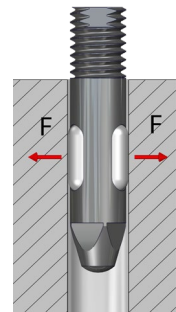


### Technical specifications

Technical specifications	GI010
Working pressure [bar]	3 - 6
Grip force at 6 bar [N]	20
For bore diameter [mm]	10,1 – 11,0
Allowed component weight [kg]	2
Gripper weight [kg]	0.018
Compressed air connection Ø	M5
Assembly Ø	M10
Stroke cycles at ideal application conditions	500.000
Membrane material	Silicone rubber
Temperature range	-40° C to 300° C

### Limits of the application range

Minimum immersion depth of the membrane [%]	60
To protect the membrane from damage at low installation depth, use customers hull	DH = DGIS+10%
Reduced grip force, when the membrane is not completely covered	



### Internal gripper Ø010...

G-GI010 External diameter 10, screw thread M10

### Replacement tube

EG-GI010-S for internal gripper GI010

Pos.	Description
1	Hull
2	Mandrel
3	Tube
4	O-ring 1
5	O-ring 2

# G-GI011

Technical specifications

# GRIP

### Operating mode:

The internal grippers dip into drillings, enlarge their external diameter by expansion of the silicone membrane, under pressure, and thus frictionally engaged hold to the bore wall. When pressure is switched off, the silicone membrane self-reliant retracts into the grippers inside due to its elastic behavior.

### Advantages:

- Minimum installation size possible
- Low gripper weight
- Simple gripper principle
- Cost-efficient
- Quick membrane replacement possible
- Indirect request via pressure switch in the supply line possible

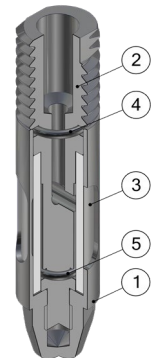
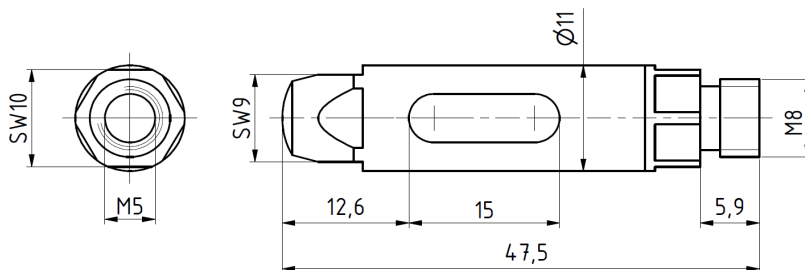
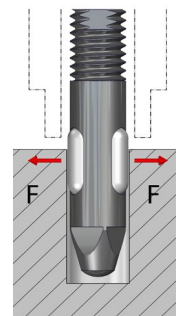
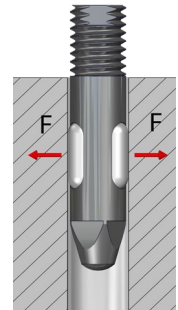


### Technical specifications

Technical specifications	GI011
Working pressure [bar]	3 - 6
Grip force at 6 bar [N]	25
For bore diameter [mm]	11,1 – 12,0
Allowed component weight [kg]	2,5
Gripper weight [kg]	0,022
Compressed air connection Ø	M5
Assembly Ø	M8
Stroke cycles at ideal application conditions	500.000
Membrane material	Silicone rubber
Temperature range	-40° C to 300° C

### Limits of the application range

Minimum immersion depth of the membrane [%]	60
To protect the membrane from damage at low installation depth, use customers hull	DH = DGIS+10%
Reduced grip force, when the membrane is not completely covered	



### Internal gripper Ø011...

G-GI011 External diameter 11, screw thread M8

### Replacement tube

EG-GI011-S for internal gripper GI011

Pos.	Description
1	Hull
2	Mandrel
3	Tube
4	O-ring 1
5	O-ring 2

# G-GI012

Technical specifications

# GRIP

### Operating mode:

The internal grippers dip into drillings, enlarge their external diameter by expansion of the silicone membrane, under pressure, and thus frictionally engaged hold to the bore wall. When pressure is switched off, the silicone membrane self-reliant retracts into the grippers inside due to its elastic behavior.

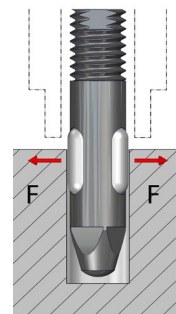
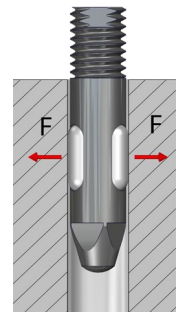
### Advantages:

- Minimum installation size possible
- Low gripper weight
- Simple gripper principle
- Cost-efficient
- Quick membrane replacement possible
- Indirect request via pressure switch in the supply line possible



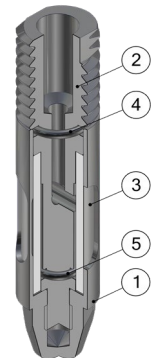
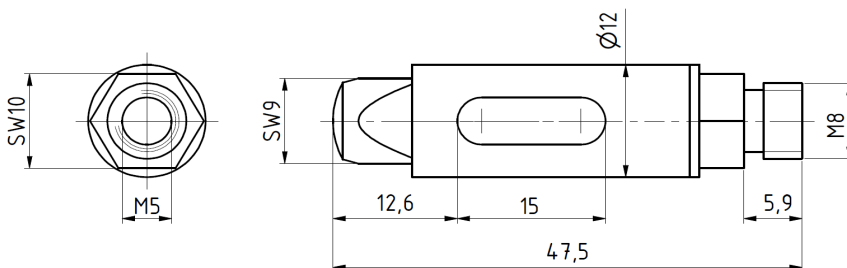
### Technical specifications

Technical specifications	GI012
Working pressure [bar]	3 - 6
Grip force at 6 bar [N]	30
For bore diameter [mm]	12,1 – 13,5
Allowed component weight [kg]	3
Gripper weight [kg]	0,026
Compressed air connection Ø	M5
Assembly Ø	M8
Stroke cycles at ideal application conditions	500.000
Membrane material	Silicone rubber
Temperature range	-40° C to 300° C



### Limits of the application range

Minimum immersion depth of the membrane [%]	60
To protect the membrane from damage at low installation depth, use customers hull	DH = DGIS+10%
Reduced grip force, when the membrane is not completely covered	



### Internal gripper Ø012...

G-GI012 External diameter 12, screw thread M8

### Replacement tube

EG-GI012-S for internal gripper GI012

Pos.	Description
1	Hull
2	Mandrel
3	Tube
4	O-ring 1
5	O-ring 2