

# G-GI005

Technical specifications



### Operating mode:

The internal grippers dip into drillings, enlarge their external diameter by expansion of the silicone membrane, under pressure, and thus frictionally engaged hold to the bore wall. When pressure is switched off, the silicone membrane self-reliant retracts into the grippers inside due to its elastic behavior.

### Advantages:

- Minimum installation size possible
- Low gripper weight
- Simple gripper principle
- Cost-efficient
- Quick membrane replacement possible
- Indirect request via pressure switch in the supply line possible

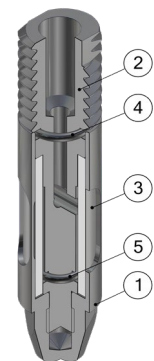
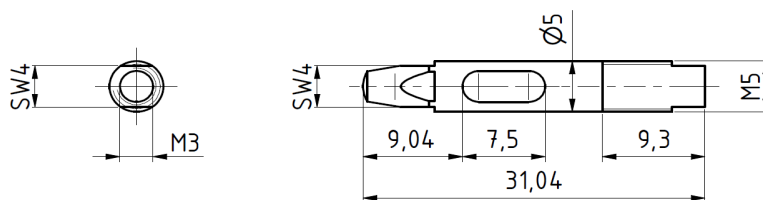
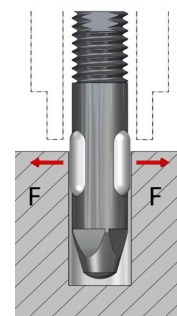
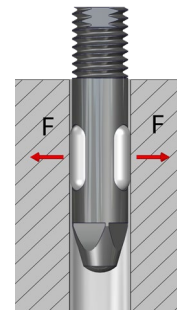


### Technical specifications

Technical specifications	GI005
Working pressure [bar]	3 - 6
Grip force at 6 bar [N]	4
For bore diameter [mm]	5,1 – 6,0
Allowed component weight [kg]	0,4
Gripper weight [kg]	0.003
Compressed air connection Ø	M3
Assembly Ø	M5
Stroke cycles at ideal application conditions	500.000
Membrane material	Silicone rubber
Temperature range	-40° C to 300° C

### Limits of the application range

Minimum immersion depth of the membrane [%]	60
To protect the membrane from damage at low installation depth, use customers hull	DH = DGIS+10%
Reduced grip force, when the membrane is not completely covered	



### Internal gripper Ø005...

G-GI005 External diameter 5, screw thread M5

### Replacement tube

EG-GI005-S for internal gripper GI005

Pos.	Description
1	Hull
2	Mandrel
3	Tube
4	O-ring 1
5	O-ring 2

# G-GI006

Technical specifications

# GRIP

### Operating mode:

The internal grippers dip into drillings, enlarge their external diameter by expansion of the silicone membrane, under pressure, and thus frictionally engaged hold to the bore wall. When pressure is switched off, the silicone membrane self-reliant retracts into the grippers inside due to its elastic behavior.

### Advantages:

- Minimum installation size possible
- Low gripper weight
- Simple gripper principle
- Cost-efficient
- Quick membrane replacement possible
- Indirect request via pressure switch in the supply line possible

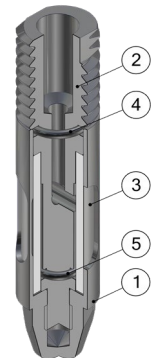
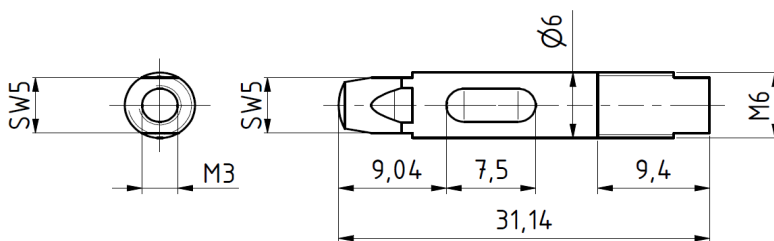
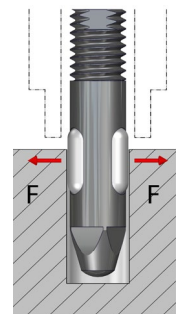
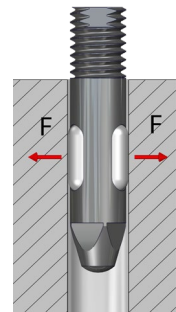


### Technical specifications

Technical specifications	GI006
Working pressure [bar]	3 - 6
Grip force at 6 bar [N]	5
For bore diameter [mm]	6,1 – 7,0
Allowed component weight [kg]	0,5
Gripper weight [kg]	0.005
Compressed air connection Ø	M3
Assembly Ø	M6
Stroke cycles at ideal application conditions	500.000
Membrane material	Silicone rubber
Temperature range	-40° C to 300° C

### Limits of the application range

Minimum immersion depth of the membrane [%]	60
To protect the membrane from damage at low installation depth, use customers hull	DH = DGIS+10%
Reduced grip force, when the membrane is not completely covered	



### Internal gripper Ø006...

G-GI006 External diameter 6, screw thread M6

### Replacement tube

EG-GI006-S for internal gripper GI006

Pos.	Description
1	Hull
2	Mandrel
3	Tube
4	O-ring 1
5	O-ring 2

# G-GI007

Technical specifications

# GRIP

### Operating mode:

The internal grippers dip into drillings, enlarge their external diameter by expansion of the silicone membrane, under pressure, and thus frictionally engaged hold to the bore wall. When pressure is switched off, the silicone membrane self-reliant retracts into the grippers inside due to its elastic behavior.

### Advantages:

- Minimum installation size possible
- Low gripper weight
- Simple gripper principle
- Cost-efficient
- Quick membrane replacement possible
- Indirect request via pressure switch in the supply line possible

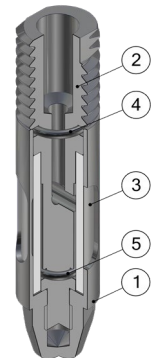
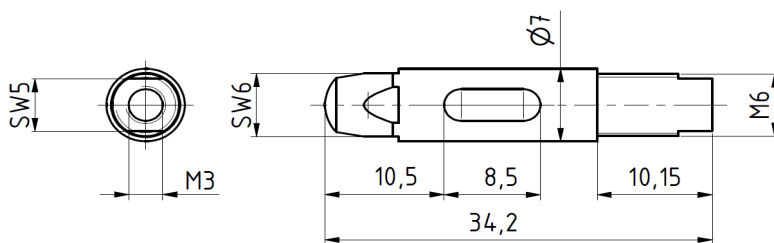
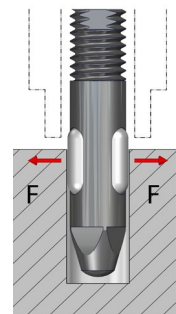
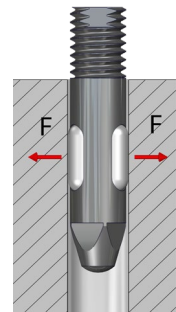


### Technical specifications

Technical specifications	GI007
Working pressure [bar]	3 - 6
Grip force at 6 bar [N]	7
For bore diameter [mm]	7,1 - 8,0
Allowed component weight [kg]	0,7
Gripper weight [kg]	0.007
Compressed air connection Ø	M3
Assembly Ø	M6
Stroke cycles at ideal application conditions	500.000
Membrane material	Silicone rubber
Temperature range	-40° C to 300° C

### Limits of the application range

Minimum immersion depth of the membrane [%]	60
To protect the membrane from damage at low installation depth, use customers hull	DH = DGIS+10%
Reduced grip force, when the membrane is not completely covered	



### Internal gripper Ø007...

G-GI007 External diameter 7, screw thread M6

### Replacement tube

EG-GI007-S for internal gripper GI007

Pos.	Description
1	Hull
2	Mandrel
3	Tube
4	O-ring 1
5	O-ring 2

# G-GI008

Technical specifications

# GRIP

### Operating mode:

The internal grippers dip into drillings, enlarge their external diameter by expansion of the silicone membrane, under pressure, and thus frictionally engaged hold to the bore wall. When pressure is switched off, the silicone membrane self-reliant retracts into the grippers inside due to its elastic behavior.

### Advantages:

- Minimum installation size possible
- Low gripper weight
- Simple gripper principle
- Cost-efficient
- Quick membrane replacement possible
- Indirect request via pressure switch in the supply line possible

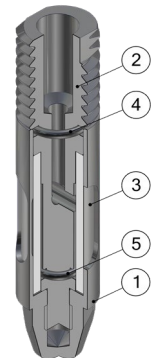
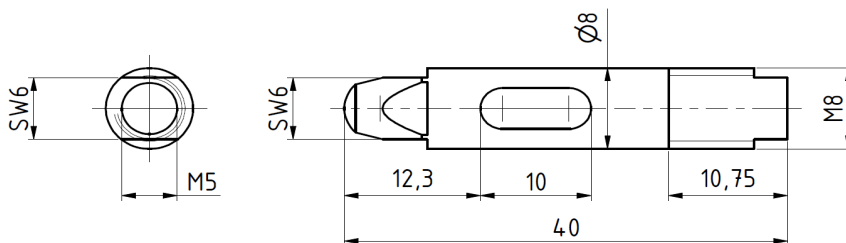
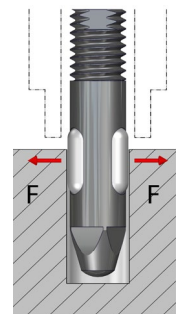
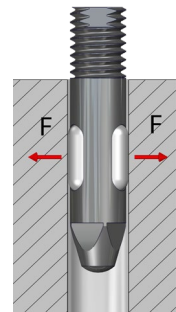


### Technical specifications

Technical specifications	GI008
Working pressure [bar]	3 - 6
Grip force at 6 bar [N]	17
For bore diameter [mm]	8,1 – 9,0
Allowed component weight [kg]	1,7
Gripper weight [kg]	0.01
Compressed air connection Ø	M5
Assembly Ø	M8
Stroke cycles at ideal application conditions	500.000
Membrane material	Silicone rubber
Temperature range	-40° C to 300° C

### Limits of the application range

Minimum immersion depth of the membrane [%]	60
To protect the membrane from damage at low installation depth, use customers hull	DH = DGIS+10%
Reduced grip force, when the membrane is not completely covered	



### Internal gripper Ø008...

G-GI008 External diameter 8, screw thread M8

### Replacement tube

EG-GI008-S for internal gripper GI008

Pos.	Description
1	Hull
2	Mandrel
3	Tube
4	O-ring 1
5	O-ring 2