

G-GIS017

Technical specifications



Operating mode:

The internal grippers dip into drillings, enlarge their external diameter by expansion of the silicone membrane, under pressure, and thus frictionally engaged hold to the bore wall. When pressure is switched off, the silicone membrane self-reliant retracts into the grippers inside due to its elastic behavior.

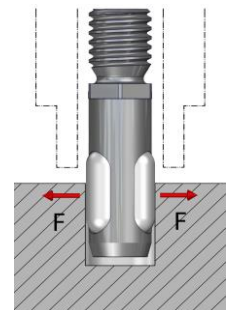
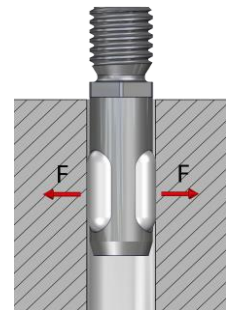
Advantages:

- Minimum installation size possible
- Width across flats for assembly
- Minimum immersion depth
- Low gripper weight
- Simple gripper principle
- Cost-efficient
- Quick membrane replacement possible
- Indirect request via pressure switch in the supply line possible



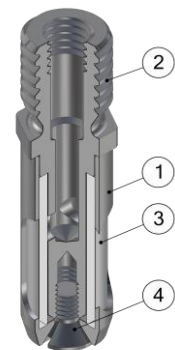
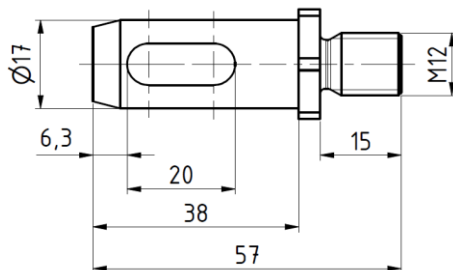
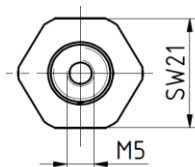
Technical specifications

Technical specifications	GIS017
Working pressure [bar]	3 - 6
Grip force at 6 bar [N]	50
For bore diameter [mm]	17,1 – 18,5
Allowed component weight [kg]	5
Gripper weight [kg]	0.072
Compressed air connection Ø	M5
Assembly Ø	M12
Stroke cycles at ideal application conditions	500.000
Membrane material	Silicone rubber
Temperature range	-40° C to 300° C



Limits of the application range

Minimum immersion depth of the membrane [%]	80
To protect the membrane from damage at low installation depth, use customers hull	DH = DGIS+10%
Reduced grip force, when the membrane is not completely covered	



Internal gripper lowering Ø017...

G-GIS017 External diameter 17, screw thread M12

Replacement tube

EG-GI017-S for internal gripper counter bore GIS017

Pos.	Description
1	Hull
2	Arbor
3	Tube
4	Counter sunk screw

G-GIS018

Technical specifications



Operating mode:

The internal grippers dip into drillings, enlarge their external diameter by expansion of the silicone membrane, under pressure, and thus frictionally engaged hold to the bore wall. When pressure is switched off, the silicone membrane self-reliant retracts into the grippers inside due to its elastic behavior.

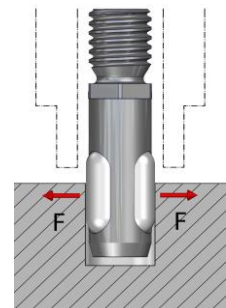
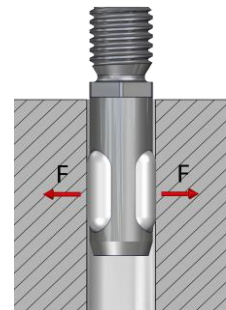
Advantages:

- Minimum installation size possible
- Width across flats for assembly
- Minimum immersion depth
- Low gripper weight
- Simple gripper principle
- Cost-efficient
- Quick membrane replacement possible
- Indirect request via pressure switch in the supply line possible



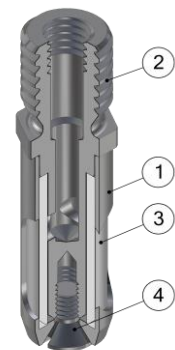
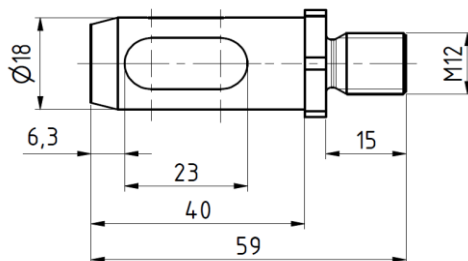
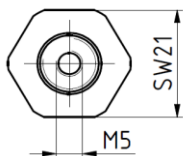
Technical specifications

Technical specifications	GIS018
Working pressure [bar]	3 - 6
Grip force at 6 bar [N]	50
For bore diameter [mm]	18,1 – 19,5
Allowed component weight [kg]	5
Gripper weight [kg]	0.08
Compressed air connection Ø	M5
Assembly Ø	M12
Stroke cycles at ideal application conditions	500.000
Membrane material	Silicone rubber
Temperature range	-40° C to 300° C



Limits of the application range

Minimum immersion depth of the membrane [%]	80
To protect the membrane from damage at low installation depth, use customers hull	DH = DGIS+10%
Reduced grip force, when the membrane is not completely covered	



Internal gripper lowering Ø018...

G-GIS018 External diameter 18, screw thread M12

Replacement tube

EG-GI018-S for internal gripper counter bore GIS018

Pos.	Description
1	Hull
2	Arbor
3	Tube
4	Counter sunk screw

G-GIS019

Technical specifications



Operating mode:

The internal grippers dip into drillings, enlarge their external diameter by expansion of the silicone membrane, under pressure, and thus frictionally engaged hold to the bore wall. When pressure is switched off, the silicone membrane self-reliant retracts into the grippers inside due to its elastic behavior.

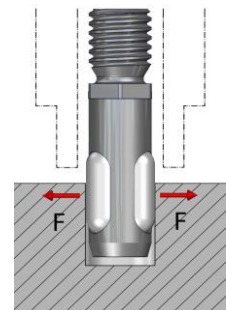
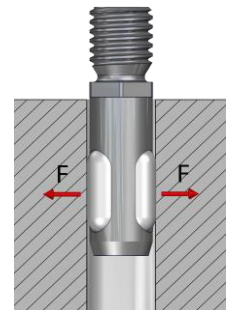
Advantages:

- Minimum installation size possible
- Width across flats for assembly
- Minimum immersion depth
- Low gripper weight
- Simple gripper principle
- Cost-efficient
- Quick membrane replacement possible
- Indirect request via pressure switch in the supply line possible



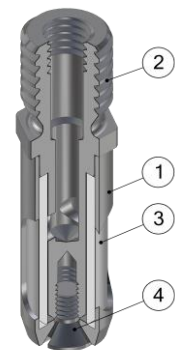
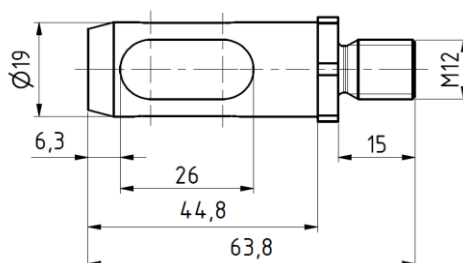
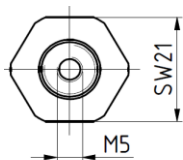
Technical specifications

Technical specifications	GIS019
Working pressure [bar]	3 - 6
Grip force at 6 bar [N]	60
For bore diameter [mm]	19,1 – 21,0
Allowed component weight [kg]	6
Gripper weight [kg]	0.096
Compressed air connection Ø	M5
Assembly Ø	M12
Stroke cycles at ideal application conditions	500.000
Membrane material	Silicone rubber
Temperature range	-40° C to 300° C



Limits of the application range

Minimum immersion depth of the membrane [%]	80
To protect the membrane from damage at low installation depth, use customers hull	DH = DGIS+10%
Reduced grip force, when the membrane is not completely covered	



Internal gripper lowering Ø019...

G-GIS019 External diameter 19, screw thread M12

Replacement tube

EG-GI019-S for internal gripper counter bore GIS019

Pos.	Description
1	Hull
2	Arbor
3	Tube
4	Counter sunk screw

G-GIS020

Technical specifications



Operating mode:

The internal grippers dip into drillings, enlarge their external diameter by expansion of the silicone membrane, under pressure, and thus frictionally engaged hold to the bore wall. When pressure is switched off, the silicone membrane self-reliant retracts into the grippers inside due to its elastic behavior.

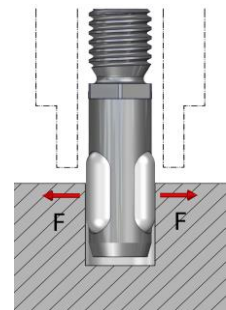
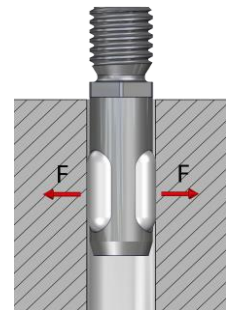
Advantages:

- Minimum installation size possible
- Width across flats for assembly
- Minimum immersion depth
- Low gripper weight
- Simple gripper principle
- Cost-efficient
- Quick membrane replacement possible
- Indirect request via pressure switch in the supply line possible



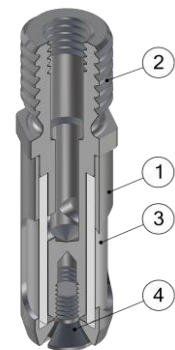
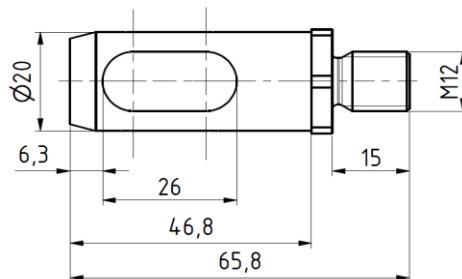
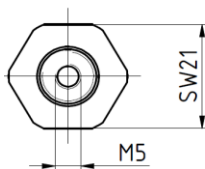
Technical specifications

Technical specifications	GIS020
Working pressure [bar]	3 - 6
Grip force at 6 bar [N]	60
For bore diameter [mm]	20,1 –21,5
Allowed component weight [kg]	6
Gripper weight [kg]	0.11
Compressed air connection Ø	M5
Assembly Ø	M12
Stroke cycles at ideal application conditions	500.000
Membrane material	Silicone rubber
Temperature range	-40° C to 300° C



Limits of the application range

Minimum immersion depth of the membrane [%]	80
To protect the membrane from damage at low installation depth, use customers hull	DH = DGIS+10%
Reduced grip force, when the membrane is not completely covered	



Internal gripper lowering Ø020...

G-GIS020 External diameter 20, screw thread M12

Replacement tube

EG-GI020-S for internal gripper counter bore GIS020

Pos.	Description
1	Hull
2	Arbor
3	Tube
4	Counter sunk screw