

G-GI017

Technical specifications

GRIP

Operating mode:

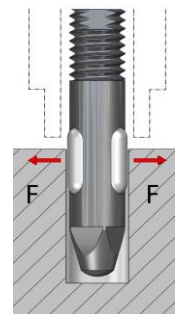
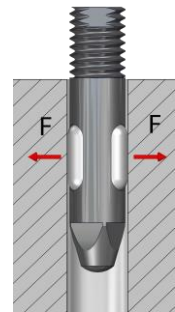
The internal grippers dip into drillings, enlarge their external diameter by expansion of the silicone membrane, under pressure, and thus frictionally engaged hold to the bore wall. When pressure is switched off, the silicone membrane self-reliant retracts into the grippers inside due to its elastic behavior.

Advantages:

- Minimum installation size possible
- Low gripper weight
- Simple gripper principle
- Cost-efficient
- Quick membrane replacement possible
- Indirect request via pressure switch in the supply line possible

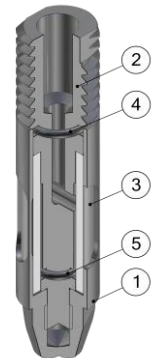
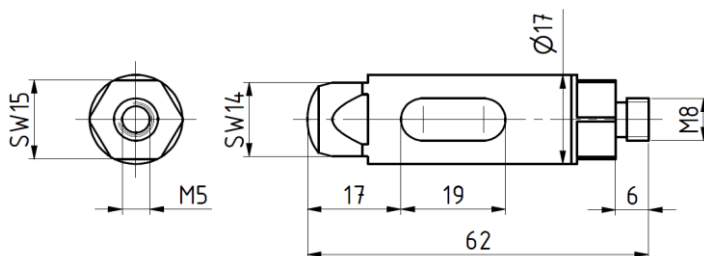


Technical specifications	GI017
Working pressure [bar]	3 - 6
Grip force at 6 bar [N]	50
For bore diameter [mm]	17,1 – 18,5
Allowed component weight [kg]	5
Gripper weight [kg]	0.07
Compressed air connection Ø	M5
Assembly Ø	M8
Stroke cycles at ideal application conditions	500.000
Membrane material	Silicone rubber
Temperature range	-40° C to 300° C



Limits of the application range

Minimum immersion depth of the membrane [%]	80
To protect the membrane from damage at low installation depth, use customers hull	DH = DGI+10%
Reduced grip force, when the membrane is not completely covered	



Internal gripper Ø017...

G-GI017 External diameter 17, screw thread M8

Replacement tube

EG-GI017-S for internal gripper GI017

Pos.	Description
1	Hull
2	Mandrel
3	Tube
4	O-ring 1
5	O-ring 2

G-GI018

Technical specifications

GRIP

Operating mode:

The internal grippers dip into drillings, enlarge their external diameter by expansion of the silicone membrane, under pressure, and thus frictionally engaged hold to the bore wall. When pressure is switched off, the silicone membrane self-reliant retracts into the grippers inside due to its elastic behavior.

Advantages:

- Minimum installation size possible
- Low gripper weight
- Simple gripper principle
- Cost-efficient
- Quick membrane replacement possible
- Indirect request via pressure switch in the supply line possible

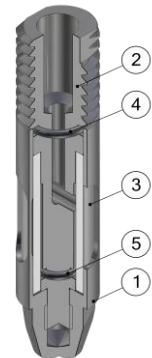
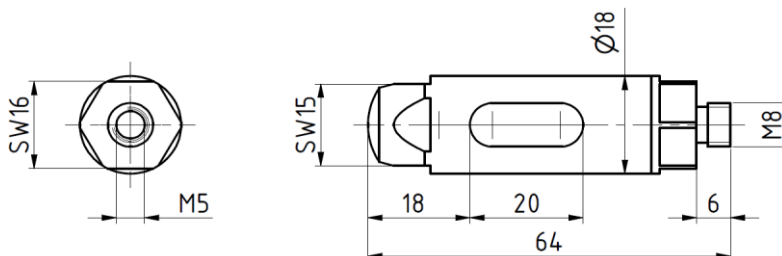
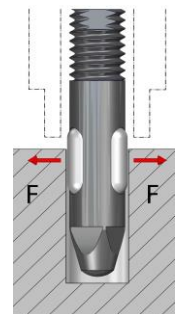
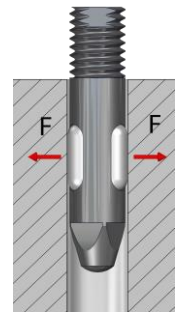


Technical specifications

Technical specifications	GI018
Working pressure [bar]	3 - 6
Grip force at 6 bar [N]	50
For bore diameter [mm]	18,1 – 19,5
Allowed component weight [kg]	5
Gripper weight [kg]	0.084
Compressed air connection Ø	M5
Assembly Ø	M8
Stroke cycles at ideal application conditions	500.000
Membrane material	Silicone rubber
Temperature range	-40° C to 300° C

Limits of the application range

Minimum immersion depth of the membrane [%]	80
To protect the membrane from damage at low installation depth, use customers hull	DH = DGI+10%
Reduced grip force, when the membrane is not completely covered	



Internal gripper Ø018...

G-GI018 External diameter 18, screw thread M8

Replacement tube

EG-GI018-S for internal gripper GI018

Pos.	Description
1	Hull
2	Mandrel
3	Tube
4	O-ring 1
5	O-ring 2

G-GI019

Technical specifications



Operating mode:

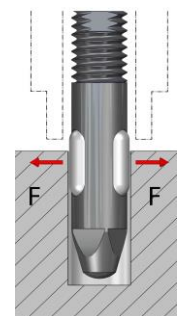
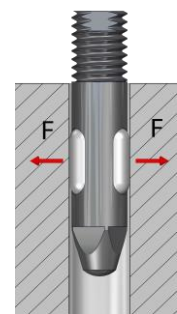
The internal grippers dip into drillings, enlarge their external diameter by expansion of the silicone membrane, under pressure, and thus frictionally engaged hold to the bore wall. When pressure is switched off, the silicone membrane self-reliant retracts into the grippers inside due to its elastic behavior.

Advantages:

- Minimum installation size possible
- Low gripper weight
- Simple gripper principle
- Cost-efficient
- Quick membrane replacement possible
- Indirect request via pressure switch in the supply line possible

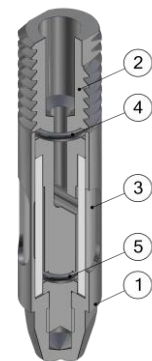
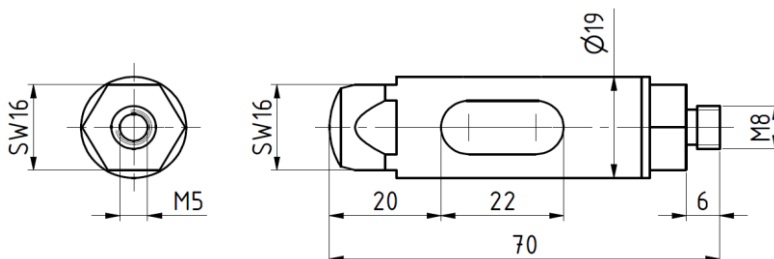


Technical specifications	GI019
Working pressure [bar]	3 - 6
Grip force at 6 bar [N]	60
For bore diameter [mm]	19,1 – 21,0
Allowed component weight [kg]	6
Gripper weight [kg]	0.102
Compressed air connection Ø	M5
Assembly Ø	M8
Stroke cycles at ideal application conditions	500.000
Membrane material	Silicone rubber
Temperature range	-40° C to 300° C



Limits of the application range

Minimum immersion depth of the membrane [%]	80
To protect the membrane from damage at low installation depth, use customers hull	DH = DGI+10%
Reduced grip force, when the membrane is not completely covered	



Internal gripper Ø019...

G-GI019	External diameter 19, screw thread M8
---------	---------------------------------------

Replacement tube

EG-GI019-S	for internal gripper GI019
------------	----------------------------

Pos.	Description
1	Hull
2	Mandrel
3	Tube
4	O-ring 1
5	O-ring 2

G-GI020

Technical specifications

GRIP

Operating mode:

The internal grippers dip into drillings, enlarge their external diameter by expansion of the silicone membrane, under pressure, and thus frictionally engaged hold to the bore wall. When pressure is switched off, the silicone membrane self-reliant retracts into the grippers inside due to its elastic behavior.

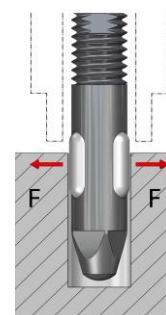
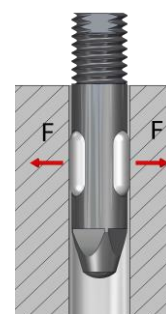
Advantages:

- Minimum installation size possible
- Low gripper weight
- Simple gripper principle
- Cost-efficient
- Quick membrane replacement possible
- Indirect request via pressure switch in the supply line possible



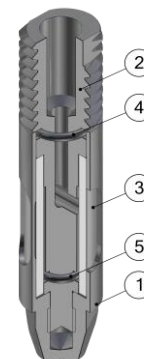
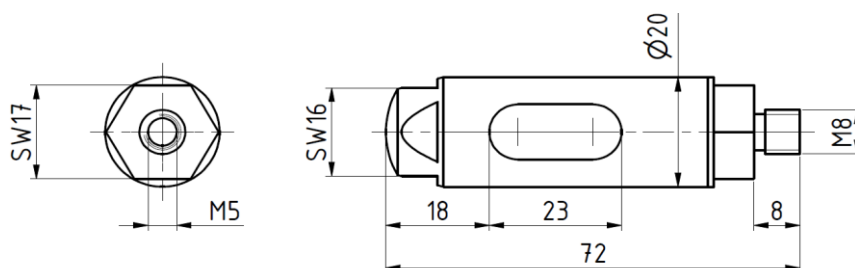
Technical specifications

Technical specifications	GI020
Working pressure [bar]	3 - 6
Grip force at 6 bar [N]	60
For bore diameter [mm]	20,1 – 21,5
Allowed component weight [kg]	6
Gripper weight [kg]	0.114
Compressed air connection Ø	M5
Assembly Ø	M8
Stroke cycles at ideal application conditions	500.000
Membrane material	Silicone rubber
Temperature range	-40° C to 300° C



Limits of the application range

Minimum immersion depth of the membrane [%]	80
To protect the membrane from damage at low installation depth, use customers hull	DH = DGI+10%
Reduced grip force, when the membrane is not completely covered	



Internal gripper Ø20...

G-GI020 External diameter 20, screw thread M8

Replacement tube

EG-GI020-S for internal gripper GI020

Pos. Description

- | | |
|---|----------|
| 1 | Hull |
| 2 | Mandrel |
| 3 | Tube |
| 4 | O-ring 1 |
| 5 | O-ring 2 |