

# G-MGW080

Technical specifications

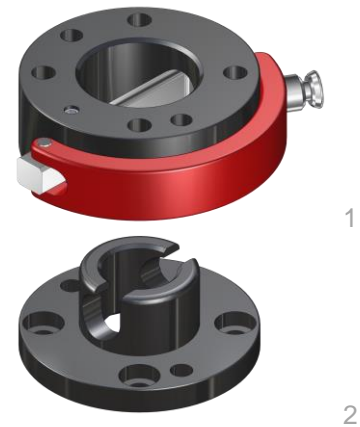


### Operating mode:

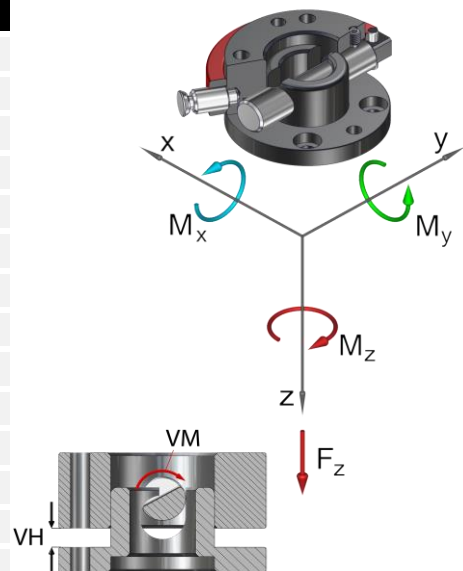
By rotating the semi-cylindrical bolt by 180°, the upper assembly (1) and the lower assembly (2) are braced in a form-closed manner

### Advantages:

- Withstands high loads with low dead weight
- Can be released and closed with one handle
- High repeat accuracy +/- 0.02 mm
- Resilient locking pin secures hand lever against independent releasing
- Holds up to 5,000 changing cycles
- During locking, the lower assembly is pulled around the locking stroke
- Interface according to DIN EN ISO 9409-1
- Optional connection of a multi energy coupling **MEK**



Technical specifications	MGW080	
Basic material	Al. anod.	St, nitrated
External diameter x Height [mm]	80 x 37	
Pitch circle diameter [mm]	63	
Repeat accuracy +/- [mm]	0,02	
Tension Fz [N]	1.000	3.000
Compression -Fz [kN]	157	313
Torsion Mz [Nm]	80	120
Bending Mx, My [Nm]	100	160
Mass [kg]	upper assembly	0,45
	lower assembly	0,15
Recommended load [kg] *	20	28
Locking torque VM [Nm]	1,5 - 6	3 - 9
Locking stroke VH [mm]	0 - 8	
Operating temperature range [°C]	-30 to +120	
* This guideline applies to the following assumptions: Acceleration: 10 m/s², gravity distance: 100 mm, double safety		



MGW Connector Ø80, drilled acc. to ISO...	
G-MGW080-2O	upper assembly, Al, anodized
G-MGW080-2OE	upper assembly, E-Mount, Al, anodized
G-MGW080-2OEN	upper assembly, E-Mount, steel, nitrated
G-MGW080-2O-N	upper assembly, steel, nitrated
G-MGW080-2U	lower assembly, Al, anodized
G-MGW080-2UE	lower assembly, E-Mount, Al, anodized
G-MGW080-2UEN	lower assembly, E-Mount, steel, nitrated
G-MGW080-2U-N	lower assembly, steel, nitrated

Replacement semi-cylindrical bolt...	
EG-MGW080-HB	for MGW080
EG-MGW080-HB-VA	for MGW080, out off VA

Replacement hand lever	
EG-MGW080-HH	for MGW080

Pos.	Description
1	Upper assembly
2	Semi-cylindrical bolt
3	Hand lever
4	Index pin
5	Cylinder bolt
6	Spring locking pin
7	Setscrew
8	Lower assembly

